

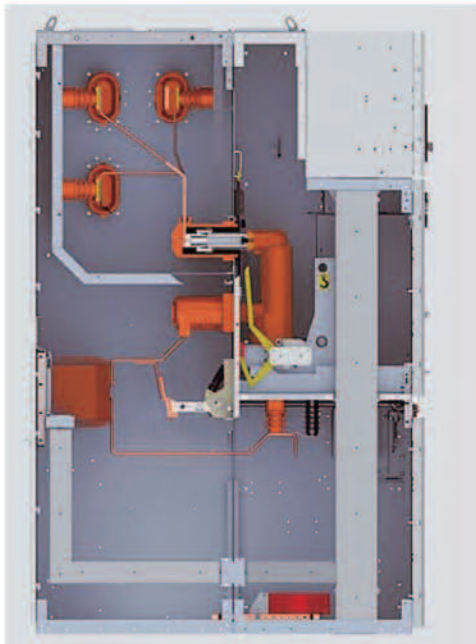
SHOW PRODUCT

Insulation accessories series



INSULATION ACCESSORIES SERIES

Installation Drawing



Function

It have the Insulation, Isolation, connection and transition function.

Usage

It is used for various of handcart type switch cabinet.

Standards:

Meets the requirements of GB3906-1991 < 3-35kv AC metal enclosed switchgear panel >

JB/T 10305-2001 < 3.6-40.5kv post insulator technique of organic material used in high equipment >

Description:

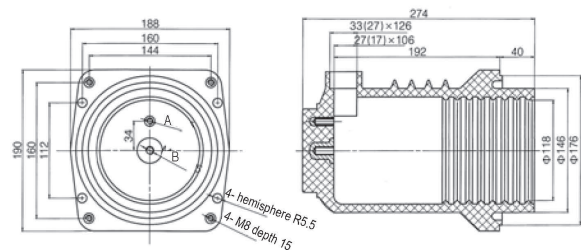
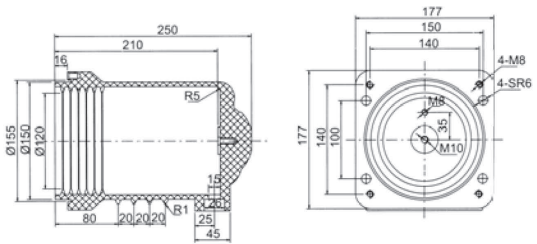
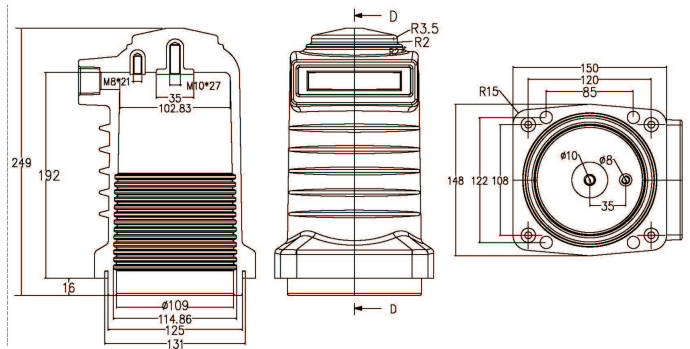
Selection of high toughness epoxy resin, with excellent mechanical properties and excellent electrical properties. Use lower reaction of active formula system, fast curing of material, low internal stress of product, to maximize the mechanical properties of the product.

Add active micro silicon powder, use epoxy resin material with automatic pressure gelating technique APG (casting). Which is beautiful in products, and good in mechanical properties of epoxy resin, but also to ensure that the insulators in humid environment maintain long-term good electrical insulation properties.

Add organic pigment, bright color, and not reduce the insulation performance of products.

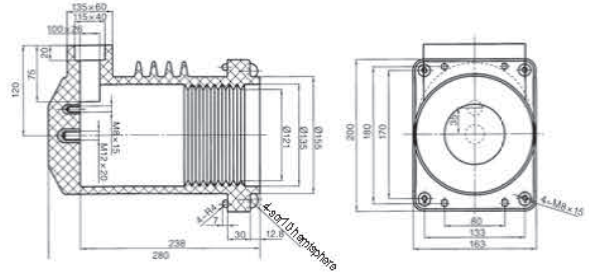
Normal Working Environment:

1. Altitude: $\leq 1000\text{m}$.
2. Ambient temperature at -30°C to $+40^{\circ}\text{C}$, the daily average temperature should not more than 30°C .
3. The daily average of relative humidity is less than 95%, the average monthly is less than 90%.
4. Working environment should be without steam, gas, chemical corrosive deposition, salt fog, dust, dirt and other dangerous explosive media, which will severely impact on insulation and conductivity of products.
5. Working environment should be regular vibration and serious bumps.

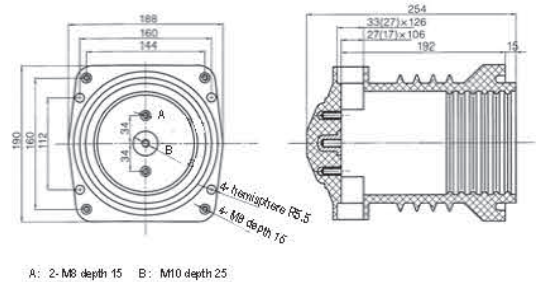


A: M8 depth 15 B: M10 depth 25

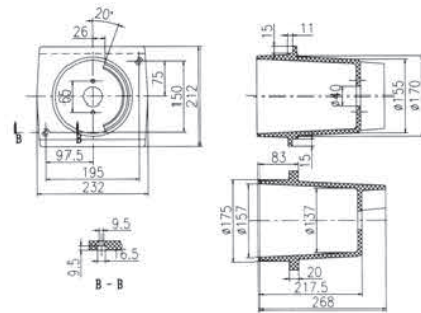
Model No.: LYC247(3VE-07190) Name: Contact box



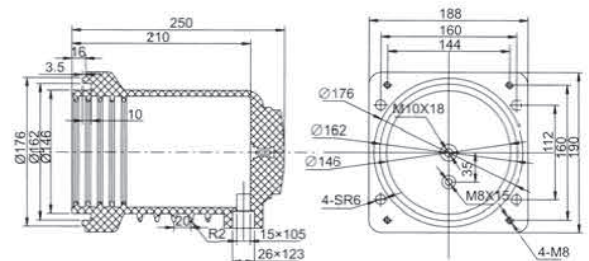
Model No.: LYC248(190tee) Name: Contact box

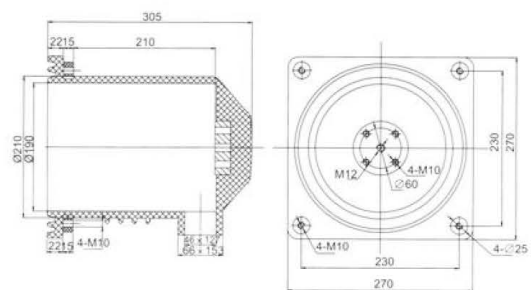
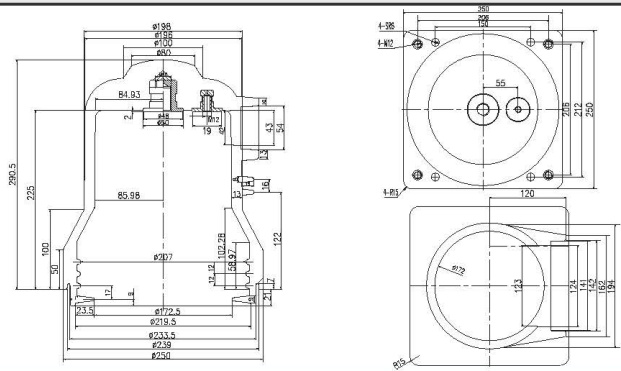
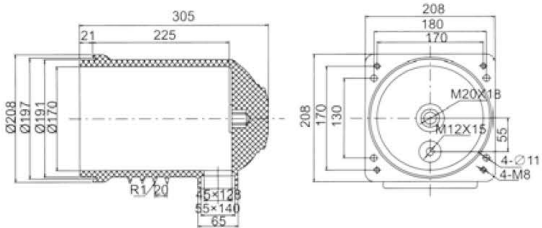
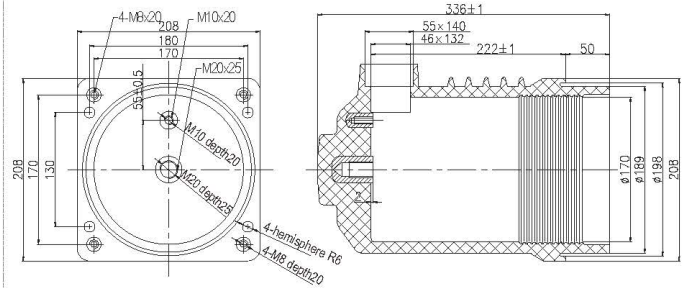


Model No.: LYC449 Name: Contact box

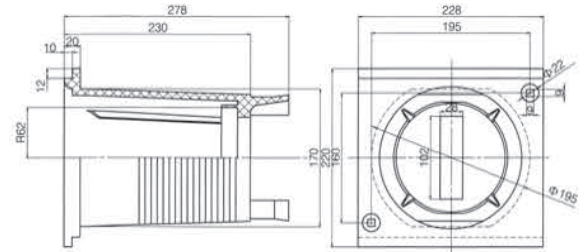


Model No.: LY103 Name: Contact box Rated current:1250-1600A

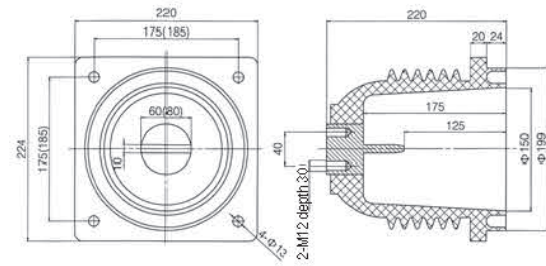




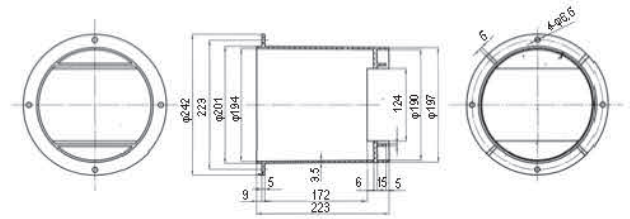
Model No.: LYC235 Name: Contact box(for KYN18 cabinet) Rated current:630A-3150A



Model No.: LYC236 Name:Contact box(for KYN1 cabinet) Rated current:630A-1250A



Model No.: LYC246 Name: Contact box



Model No.: LYC239 Name: Contact box

